

Keyless! Precise! Easy to Use Guided Surgery Kit

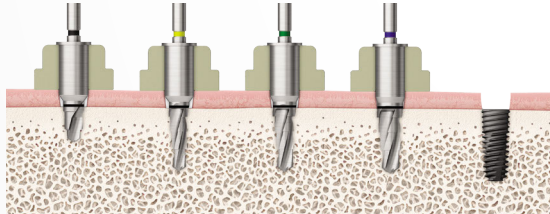
OneGuide

- Shorter drilling sequence
- Side slots for restrictive spaces
- Stabilized drilling
- Reduced heat generation

1. Shorter Drilling Sequence

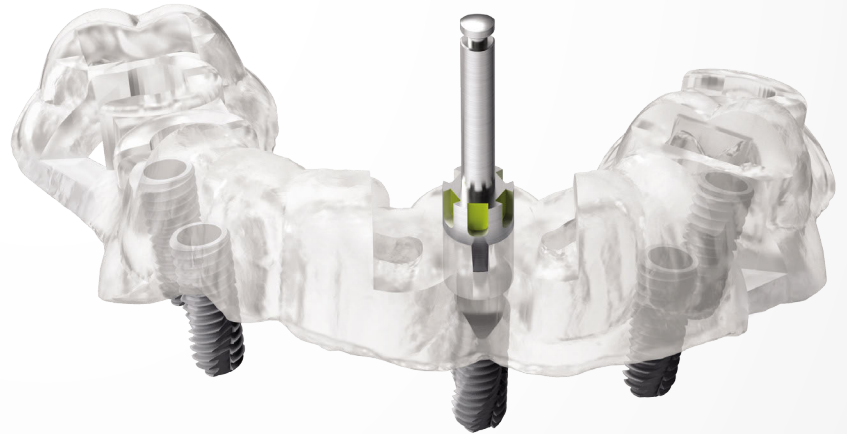
- Depending on bone density, the drilling sequence can range from 2 to 4 drills

ETIII Ø4.0



Bone Density	Initial	F3.5	F4.0	F4.5	Fixture
Soft	▲	▲			
Normal	■	■	■		
Hard	●	●		●	

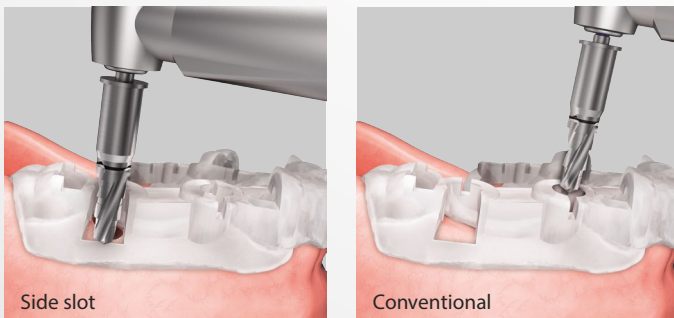
Implant placement



2. Side Slots for Restrictive Spaces

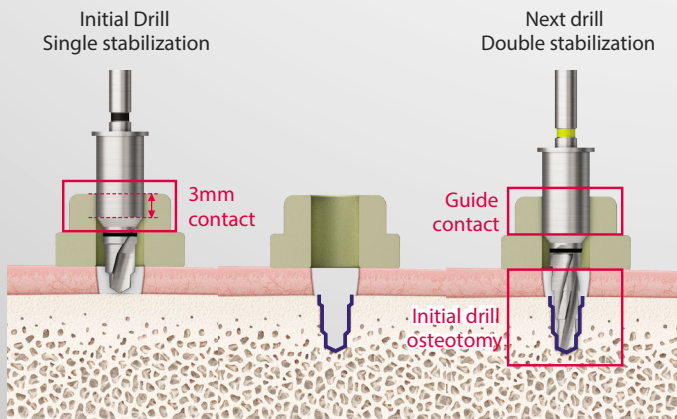
- Side slots allow for proper drilling under limited intermaxillary conditions
- Intermaxillary distance needed for the side slot is 35mm vs. conventional is 51mm
- Depending on the case, the stent can be fabricated with or without a side slot

Under limited intermaxillary distance Intermaxillary distance is not an issue



3. Stabilized Drilling

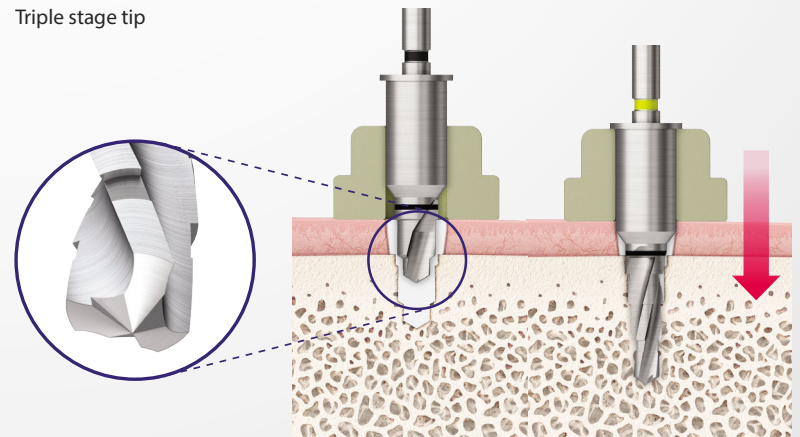
- Initial drill: 3mm of the guide section is stabilized by the stent before drilling
- After the initial drill, the next drill in the sequence is further stabilized by the stent and the osteotomy



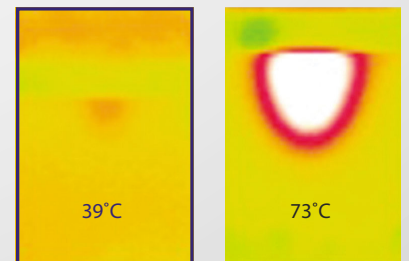
4. Reduced Heat Generation

- Triple stage tip significantly reduces heat generation when drilling the osteotomy.
- The stent's side slot allows for ample irrigation

Triple stage tip



Side slot allows for full irrigation



OneGuide drill Conventional drill
Thermographic video

OneGuide KIT

1. Initial Drill

- Remove gingiva with the Tissue Punch
- Drill the initial osteotomy



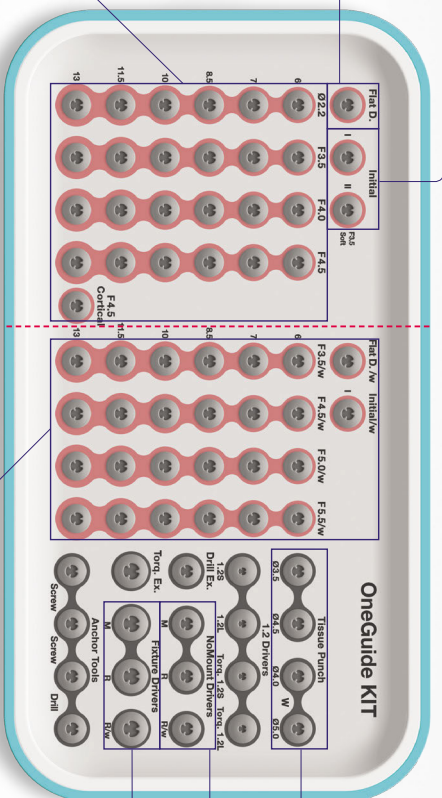
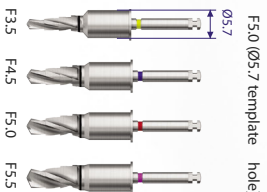
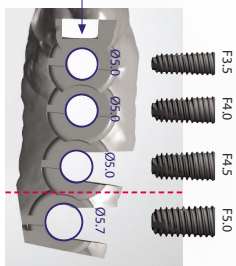
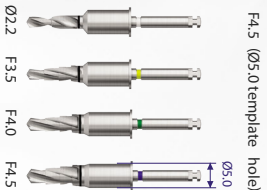
2. Flattening Drill

- Used for grinding uneven alveolar ridge
- Drill head is designed with multiple cutting edges

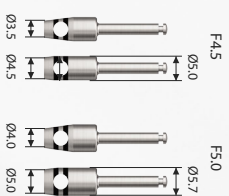


3. OneGuide Drill

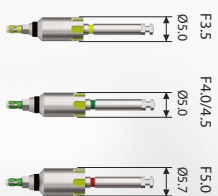
- Drills are optimized for the ETIII system
- Unique triple stage tip reduces heat generation.



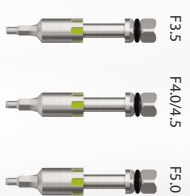
4. Tissue Punch



5. NoMount Driver



6. Fixture Driver



Drilling Sequence

Fixture Diameter	Bone Density	Initial	Ø2.2	F3.5	F4.0	F4.5	F5.0	F5.5	Fixture
F3.5	Soft	▲	▲	▲	▲	▲	▲	▲	▲
	Normal	■	■	■	■	■	■	■	■
F4.0	Soft	▲	▲	▲	▲	▲	▲	▲	▲
	Normal	■	■	■	■	■	■	■	■
F4.5	Soft	▲	▲	▲	▲	▲	▲	▲	▲
	Normal	■	■	■	■	■	■	■	■
F5.0	Soft	▲	▲	▲	▲	▲	▲	▲	▲
	Normal	■	■	■	■	■	■	■	■
F5.0	Hard	▲	▲	▲	▲	▲	▲	▲	▲
	Normal	■	■	■	■	■	■	■	■

Workflow

