

# The Most Human Non-Human Graft Material (Bovine Bone Substitute)

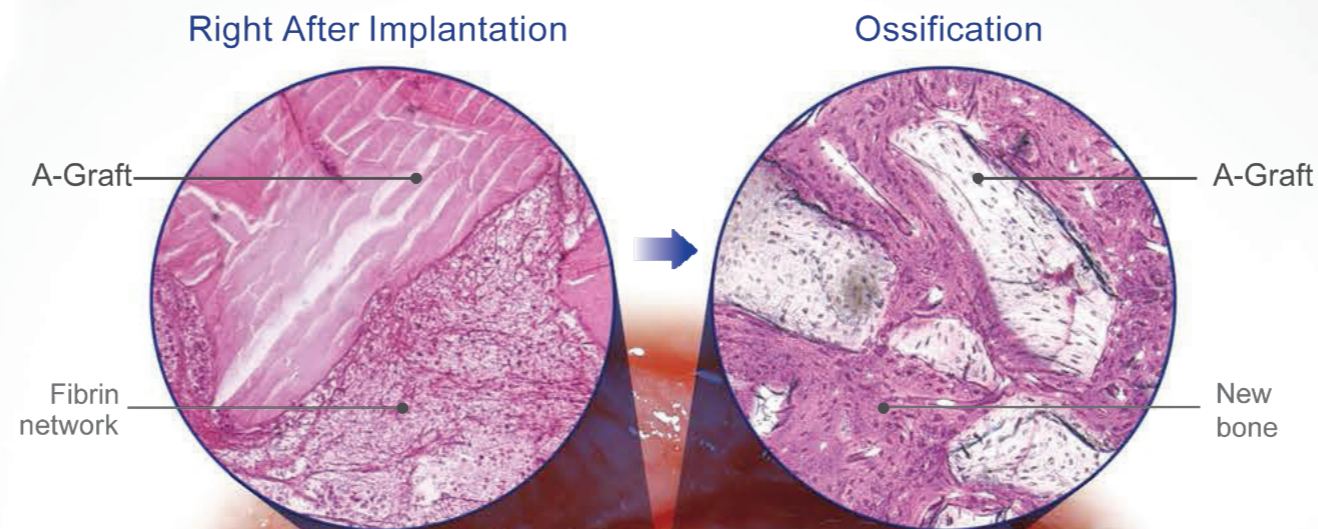
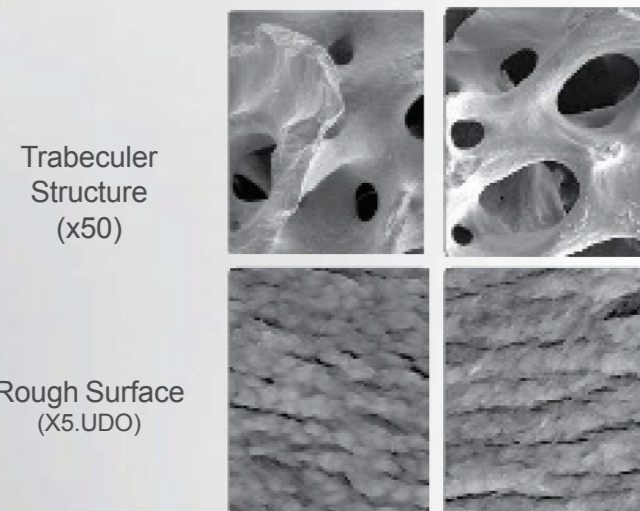
# A-Graft

- Rough, trabecular structures favorable for osteogenesis
- New bone formation with excellent blood flow
- Suitable for esthetic cases with superior volume maintenance



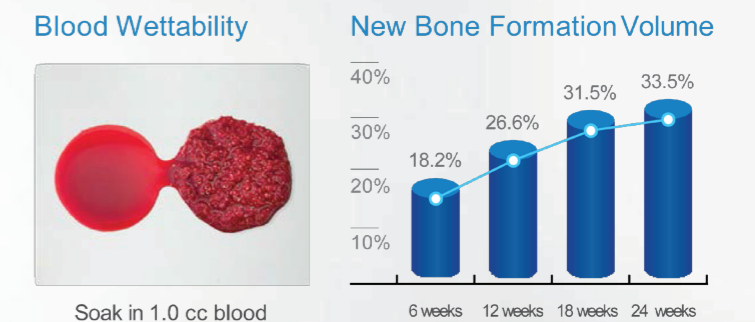
## Rough, Trabecular Structures Favorable for Osteogenesis

- Three-dimensional micro-pores allow excellent inflow of blood and osteogenic cells.
- Rough surface allows for adhesion of osteogenic cells.



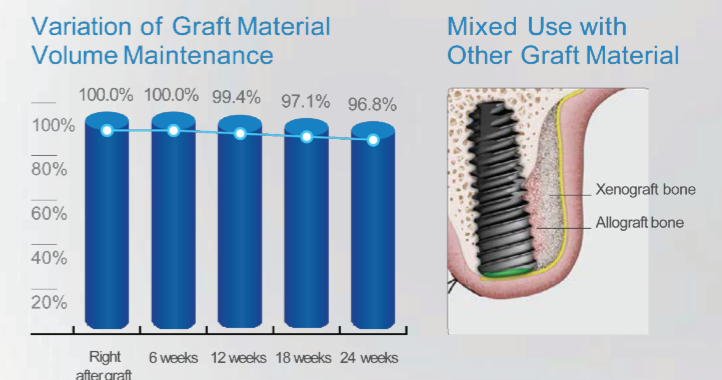
## New Bone Formation with Excellent Blood Flow

- Trabecular structure that provides exceptional wettability, allowing for more predictable new bone formation.



## Suitable for Esthetic Cases with Superior Volume Maintenance

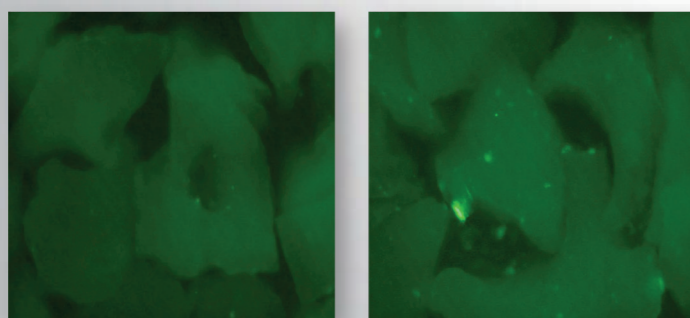
- Maintain stable volume during osteogenesis even mixed with allograft or synthetic bone.
- Predictable results in anterior cases.



## Bacteria Resistant

- A-Graft has lower bacteria adhesion compared to other products.
- Provides safety against inflammation.

Fluorescent microscopy observation (after 15 min of exposure to the same oral bacteria).



A-Graft [Hiossen]

G Company - B Product












## Risk Free Trustworthy Material



Prather Ranch supplies bovine material in compliance with ISO22442-2 for exceeding the "fit for Human consumption" requirement. On site USDA, Ante & Post Mortem Inspection.

# GBR Line-Up



Bone Graft Material			Membrane			Builder	
Allograft Bone		Xenograft Bone	Absorbable		Non-Absorbable	Non-Absorbable	
Powder / Chip		DBM	Collagen	Human Dermis	PTFE	Titanium	
 <p><b>SureOss</b> Cortical 100%</p>	 <p><b>SureOss-D</b> Demineralized Cortical 100%</p>	 <p><b>SureFuse</b> Demineralized / Gel, Putty Cortical 100%</p>	 <p><b>A-Graft</b> Bovine Bone</p>	 <p><b>CytoplastR™</b> Bovine Collagen</p>	 <p><b>SureDerm</b> Human Dermis</p>	 <p><b>Cytoplast</b> Densed PTFE</p>	 <p><b>OssBuilder</b> 3D pre-formed titanium membrane</p>
 <p><b>ExOss</b> Cortical 100%</p>	 <p><b>OsteOss</b> Cortical 50+ Cancellous 50%</p>	 <p><b>ExFuse</b> Demineralized + Cancellous / Gel, Putty</p>					